



## Water Plants

Plants that are able to be in permanent water either at a creek or dam edge or in permanent swamps.

*Persicaria lapathifolium* - Knotweed

*Ranunculus inundates* - River Buttercup

*Phragmites australis* - Native Reed

*Restio tetraphyllus* - Tassel-rush, Tassel Cord-rush

*Triglochin microtuberosum* - Water Ribbons



*Persicaria lapathifolium*

## Groundcovers

Low growing soil stabilisers for moist creek banks and dams.

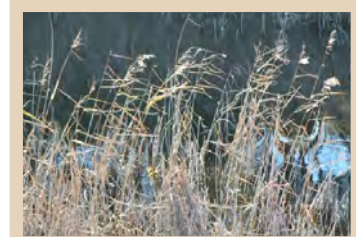
*Persicaria lapathifolium* - Knotweed

*Ranunculus inundates* - River Buttercup

*Phragmites australis* - Native Reed

*Restio tetraphyllus* - Tassel-rush, Tassel Cord-rush

*Triglochin microtuberosum* - Water Ribbons



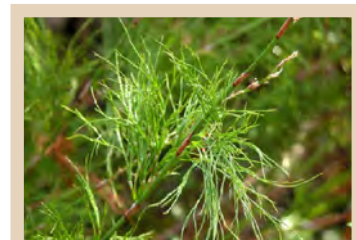
*Phragmites australis*

## Climbers & Twiners

Vines which aid soil stabilisation of creek and dam banks.

*Hardenbergia violacea* - Purple Twining Pea

*Kennedia rubicunda* - Running Postman



*Restio tetraphyllus*



*Triglochin microtuberosum*



*Kennedia rubicunda*



*Hardenbergia violacea*

## Sedges & Rushes

Plants that grow in permanent to seasonal fresh water swamps, creek and dam banks. (c)=Coastal

*Carex appressa* - Tall sedge

*Gahnia clarkei* - Tall Saw-sedge

*Gahnia melanocarpa* - Black-fruit Saw-sedge

*Gahnia aspera* - Rough Saw-sedge

*Isolepis nodosa* (c) - Knobby Club-Rush

*Juncus kraussii* (c) - Sea Rush

*Juncus usitatus* - Common Rush

*Lomandra longifolia* - Spiny-headed Mat Rush

*Dianella caerulea* - Blue Flax Lilly

*Crinum pedunculatum* (c) - Swamp Lilly

*Cladium procerum* (c) - Leafy Twig Rush



*Themeda australis*



*Crinum pedunculatum*

## Grasses

These grasses form a mat to stop soil erosion and are great for creek, river and dam banks.

*Austrodanthonia fulva* - Wallaby Grass

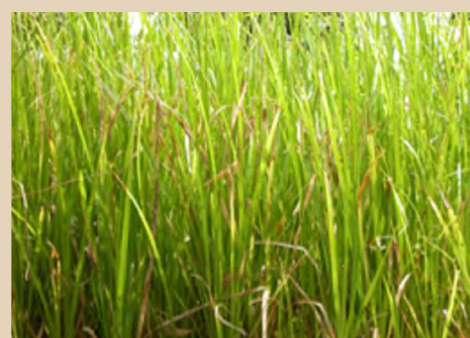
*Echinopogon caespitosus* - Hedgehog Grass

*Poa labillardieri* - Tussock Grass

*Poa affinis* - Clumping Grass

*Entolasia stricta* - Wiry Panic

*Themeda australis* - Kangaroo Grass



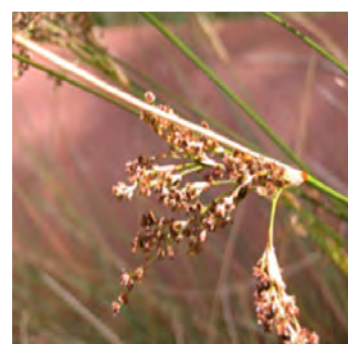
*Carex appressa*



*Gahnia clarkei*



*Isolepis nodosa*



*Juncus kraussii*