

# What's on at TIN



## Tuesday & Thursday

Coastcaring along Newcastle beaches and bushland areas

## Wednesday

Nursery Know How at the Uni site .  
\*\*Inductions for new volunteers are held every 2nd Wednesday at 10am.

## Friday:

Seed Collecting and Bushland Awareness

## Tues, Wed, Thurs, Fri

Nursery propagation activities at Parry Street.

## 2nd Sunday of the Month

Landcaring at Merewether Beach. 10am till noon.  
Meet near Merewether Surf Club. If it's too hot or wet it's off.

You can check the details of the events by phoning TIN or looking at the website  
[www.treesinnewcastle.org.au](http://www.treesinnewcastle.org.au)

## Dates to Deliberate

**TIN Committee Meeting -  
Tuesday 28th July 6-8pm**

**Stall-holders RSVP for TIN's 20th Anniversary -  
Friday 31st July**

**Schools National Tree Day-  
Friday 31st July**

**National Tree Day-  
Sunday 2nd August 9am -noon**

**Hunter Region Landcare Network -  
Saturday 15th August 10am-2.30,  
tour from 2.30pm**

**TIN Strategic Planning Session -  
Saturday 22nd August- 1-4pm**

**Creatives Call Out RSVP for TIN's  
20th Anniversary -  
Monday 14th August**

**TIN Committee Meeting -  
Tuesday 25th August 6-8pm**

**TIN's 20th & NCAC Shindig -  
Saturday 12th September**



# TINformation

252 Parry St, Newcastle West  
Ph 4969 1500, Fax 4927 6821  
[enquiries@treesinnewcastle.org.au](mailto:enquiries@treesinnewcastle.org.au)  
Open: Tuesday – Friday 8.30am-5pm

Winter 2009

## NATIONAL TREE DAY IS ON AGAIN AT KING EDWARD PARK - SUNDAY AUGUST 2<sup>ND</sup>

TIN's annual community planting extravaganza will be expanding the area below the flower garden once again this year. Five thousand plants have been growing over the past few months to be well and truly ready to hit the soil in style.

The planting runs from 9am till noon. TIN will be putting on a thankyou BBQ at lunch time to celebrate the success of another perfect planting.

Over 150 people planted last year. The event is proving to be a popular family friendly anniversary where memories of hill-sliding are shared with the younger generation over the changing landscape.

To get the most out of the planting please wear sturdy shoes, a hat and sunscreen. Gloves and planting tools are provided, but you can bring your own if you want too.

## GET GROWING - NATIONAL TREE DAY IS JUST AROUND THE CORNER

National Tree Day this year is on Sunday 2<sup>nd</sup> August for community planters and Friday 31<sup>st</sup> July for school groups.

To make any National Tree Day a success you need a few things: people, plants and a site.

TIN can provide plants-a-plenty but only if we know what kind of plants you want and how many.

The window of opportunity to make sure that we have the stock you want is rapidly closing with only a month to go.

You may have to consider substitute species too, so get thinking and give TIN a ring and talk to Sharyn in the nursery ASAP.





## CALLING ALL CREATIVES TO TIN'S 20TH ANNIVERSARY CELEBRATION -

Do you have tons of talent you'd like to share for a worthwhile cause? On Saturday 12<sup>th</sup> September TIN will be celebrating 20 years of growing the group in conjunction with the Newcastle Community Arts Centre holding their Open Day.

Do you have musical abilities? Are you a member of a choir that likes to perform? Are you a passionate performer and want to share your musical flair? TIN would love to hear from you and put you on the songlist for this very special event. Please contact the musical coordinator for the event, Di Lenhan, ph 4963 7166 or via [tapsolo@gmail.com](mailto:tapsolo@gmail.com) by August 14<sup>th</sup> to allow for the logistics to be organised.

### SPECIALTY STALLS

One of the aspects of the 20<sup>th</sup> Anniversary affair will be some market stalls to be located in the NCAC carpark area which will be pedestrians only on the day. Homemade Arts and Craft and local food are the preferred themes. If you would like to participate in the day and have something you would like to sell we are offering members and supporters first options.



Please lodge your expression of interest by 31<sup>st</sup> July to TIN with your contact details, stall type and space requirements so the planning committee can do their planning. If you'd like to join the planning committee or volunteer to assist on the day please let us know too.

### THE GLOBAL FINANCIAL CRISIS HAS ARRIVED AT TIN.

TIN's Saturday nursery service from 10am-2pm has been temporarily suspended. Unfortunately opening on a Saturday, whilst providing a community and member's service, can't be sustained at the moment. For large orders, over 100 plants, prior arrangements can be made for pickups on Saturday if necessary.

## Nursery News

Have you been into the nursery lately? It's looking very spiffy thanks to the many volunteers who have been tidying, sorting, stacking and weeding.

There's also a special spot where many an interesting plant can be found at a bargain price, from 50% to free. The range of plants is constantly changing and so it's worth popping in if you're passing by. As mentioned elsewhere, the nursery has currently suspended Saturday Opening but TIN is still open Tuesday-Friday.

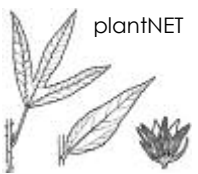
### Plants on sale while stocks last include:

- **4 for \$2:** Callistemon linearis, Callistemon rigidus, Melaleuca quinquenervia\*, Acacia irrorata, Acacia myrtifolia, Acacia longifolia
- **3 for \$2:** Melaleuca styphelioides
- **\$1 each** Cordyline peteolaris, Cordyline stricta
- **½ price:** Acacia sp\*\* (except A. terminalis and A. ulicifolia), Hibiscus heterophyllus,\*\*\*Babingtonia virgata, Dodonaea triquetra, Certain larger rainforest species, Leptospermum sp (except laevigatum)

\**Melaleuca quinquenervia* (Broad-leaved Paperbark): 8-15m, Autumn-Winter flowering, spectacular cream blooms, great for providing a winter food supply for local nectar feeding wildlife including honeyeaters and parrots during the day and bats, possums and gliders at night. The threatened Swift Parrot and Regent Honeyeater are particularly fond of it. It is a popular street tree that tolerates a wide range of soil conditions including water logging. These sog-busters will thrive where other less tough plants will drown.



\*\**Acacia decurrens* (Black Wattle): 3-10m grower in well drained soil with a tolerance for dry conditions. A fast growing, bushy nitrogen fixing wattle with yellow globular flowers between July and November. Particularly attractive for its soft feather-like phyllodes (leaf look alikes).



\*\*\**Hibiscus heterophyllus* (Native Hibiscus): A very ornamental shrub/small tree with a prickly stem and beautiful hibiscus-like flowers with a purple spot in the middle. It's a tough rainforest plant that tolerates most soil types.

Common names: Melaleuca = Paperbark, Callistemon = Bottlebrush, Acacia = Wattle





## landcare for Youth

This year Landcare For Youth (L4Y) funding was granted to the Lake Macquarie Landcare Network by the Environmental Trust. Trees In Newcastle is delivering the three year project targeting all ages of youth from preschool to University to become more involved in on-ground projects and developing a youth based network across the city.

Are you involved in a youth based group that would like some support to develop and implement an on-ground project? Do you have some youth that would like to take a leadership role in their school or community? Contact TIN for a chat so we can lend a hand.

## HUNTER REGION LANDCARE NETWORK MEETING

The HRLN meeting will be hosted by TIN at Holy Family's Regional Sustainability Centre at Janet Street Merewether on Saturday 15<sup>th</sup> August, 10am-2.30pm followed by a site tour around the school and the Merewether Beach Coastcare projects from 2.30pm. All Landcarers are welcome to attend the meeting or you can come along for the tour. This is a great opportunity to see what a school group can achieve with a supportive teacher and committed parent.

### WHERE'S TIN GOING AND HOW ARE WE GOING TO GET THERE?

Knowing what you want to do is one of those things that makes doing what you're doing a whole lot more meaningful and certainly increases the chances of getting things done that fit in with the original plans.

TIN as a community organisation has at its core a commitment to reflecting the ideals and aspirations of the members. TIN has a Strategic Plan and we want to review it so that for the next few years we are growing the organisation in a way that fits in with the capacity of TIN and the current economic climate.

A Strategic Planning session workshop to review the existing plan is pencilled in for Saturday 22<sup>nd</sup> August 1-4pm. Please RSVP for catering purposes to [enquiries@treesinnewcastle.org.au](mailto:enquiries@treesinnewcastle.org.au) or phone 4969 1500. Even if you can't make the workshop we'd love to hear your ideas.



## Propagation Projects highly successful

TIN's success in propagation has recently taken on another dimension. Three of TIN's staff, Janet (Bush Regeneration Manager), Mark (Bush Regenerator) and Cara (Nursery Assistant) have recently been involved in a 9 month intensive propagation process which has come to fruition in the successful birthing of two beautiful baby girls.

*Congratulations to Janet & Mark on bringing baby Aquilla into the world and to Cara & Justin on Adisyn's arrival*

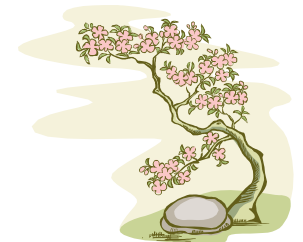
## TIN trainees turn professional

Congrats to Brett Miller and Cara Lloyd on the successful completion of their training . Brett is now a qualified Bush Regenerator and Cara is a qualified Nursery Assistant and mum, although TIN had little to do with the latter.

TIN has a fabulous track record for providing quality training over a variety of vegetation-related services and the organisation is extremely proud of Cara and Brett's achievements and pleased to have been able to provide them with an introduction to the natural resource management industry.

## TIN branches into Bonsai

An outcome from the recently-held very informative Bonsai workshop was an opportunity to provide envirohunter09 sponsors with a native Bonsai . The feedback on the Bonsai gifts was very positive and what's more it gave an opportunity to give some of the larger growing species at TIN another lease on life.



Are you part of an organisation that would like to give gifts that keep on giving and growing? TIN can provide a range of sustainable souvenirs such as plant vouchers, corporate planting days and now Bonsai natives. If you would like any of these for the end of year, especially the Bonsais, a 2 month pre-order preparation period is needed.



## BUSH REGENERATORS BITS BY ADAM CAVALLARO

As we come to the close of another financial year the Bush Regeneration crew has been busy, busy, busy. National Parks and Port Stephens contracts are just about finished.

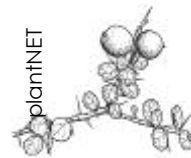
These major projects have seen the team going to some very holiday-like places. Teams have been to the beautiful islands off Port Stephens: Broughton, Cabbage Tree and Boondelbah. These projects have involved the team helping to restore habitat for the threatened Goulds Petrel which nest on Cabbage Tree and Boondelbah Islands. Apart from the island hopping we have still been visiting the lovely beaches within Nelson Bay such as Winda Whoppa, Shoal Bay and Bagnalls Beach.

### Other jobs

- Large-scale revegetation project that will see Styx Creek in the Newcastle Local Government Area reconstructed and revegetated
- Weed removal in the nationally recognised Hunter Valley Weeping Myall Endangered Ecological community
- Weed Mapping along Slatey Creek

I also would like to wish TIN and everyone involved the best of luck in the future and like to give a special shout out to all those staff (past and present) and volunteers that have made the last sevenish years an enjoyable learning experience full of Radtastic times!!!! Ciao!

**TIN will truly miss an amazing person, highly competent bush regenerator and generally wonderful fellow. We wish you all the best of fun and many special family times in Melbourne.**



## Projects on the Go



Over the past few months there have been projects-a-plenty keeping many hands busy and happy at TIN. Volunteers are always welcome to join in and lend their time and talents towards the projects.

A grant from Australia Post, through Landcare Australia, has enabled the TIN bus, lunch & seed rooms to get a flower-power makeover. It has also assisted in the production of a brochure highlighting TIN's services as well as creating six banners showcasing the various branches of the TIN tree that will also help identify TIN's "secretive location". All of these visual TIN-identifying treats will become very obvious in the very near future.

The Hunter-Central Rivers Catchment Management Authority and the Australian Government's Enviroid have continued to support TIN's coastal projects and aims. TIN's volunteers coastcare 2 days a week at various sites including King Edward Park, Shepherds Hill, Burwood Beach and Merewether Beach.

Some of the activities that have been undertaken include hand removal of a variety of weeds to increase the variety and cover of native plants and the resilience of the coastal ecosystems.

Special attention is being paid to the invasion of the native coastal vegetation communities by both Bitou Bush and introduced pasture grasses because both are recognised as Key Threatening Processes under the Threatened Species Conservation Act 1995 (NSW).

One of the important roles that these projects play is to protect and enhance ecologically significant vegetation communities including coastal headland complex and the Endangered Ecological Community - *Themeda* grassland on sea-cliffs and headlands. TIN's ongoing coastcare commitment through weed control, revegetation, sediment control and accessway provision is helping to restore what was once a common sight along the coast.



The ultimate aim is to provide an almost continuous vegetative link, where possible, from Nobbys Head in the north to Glenrock in the south – linking the coastal areas of Newcastle and Lake Macquarie.

